

E Type Unit

2 bedroom apartment plan

Unit type exists in Stages:

3 4 5



Our most popular two bedroom unit, the design of the E Type has been further refined with each new Stage.

As there are a number of different versions of the E Type design, actual room dimensions vary slightly from those shown.

Many units are a mirror image (or Em) design.

The E Type unit has two large bedrooms (both with built in wardrobes), an open plan kitchen and large covered balcony.

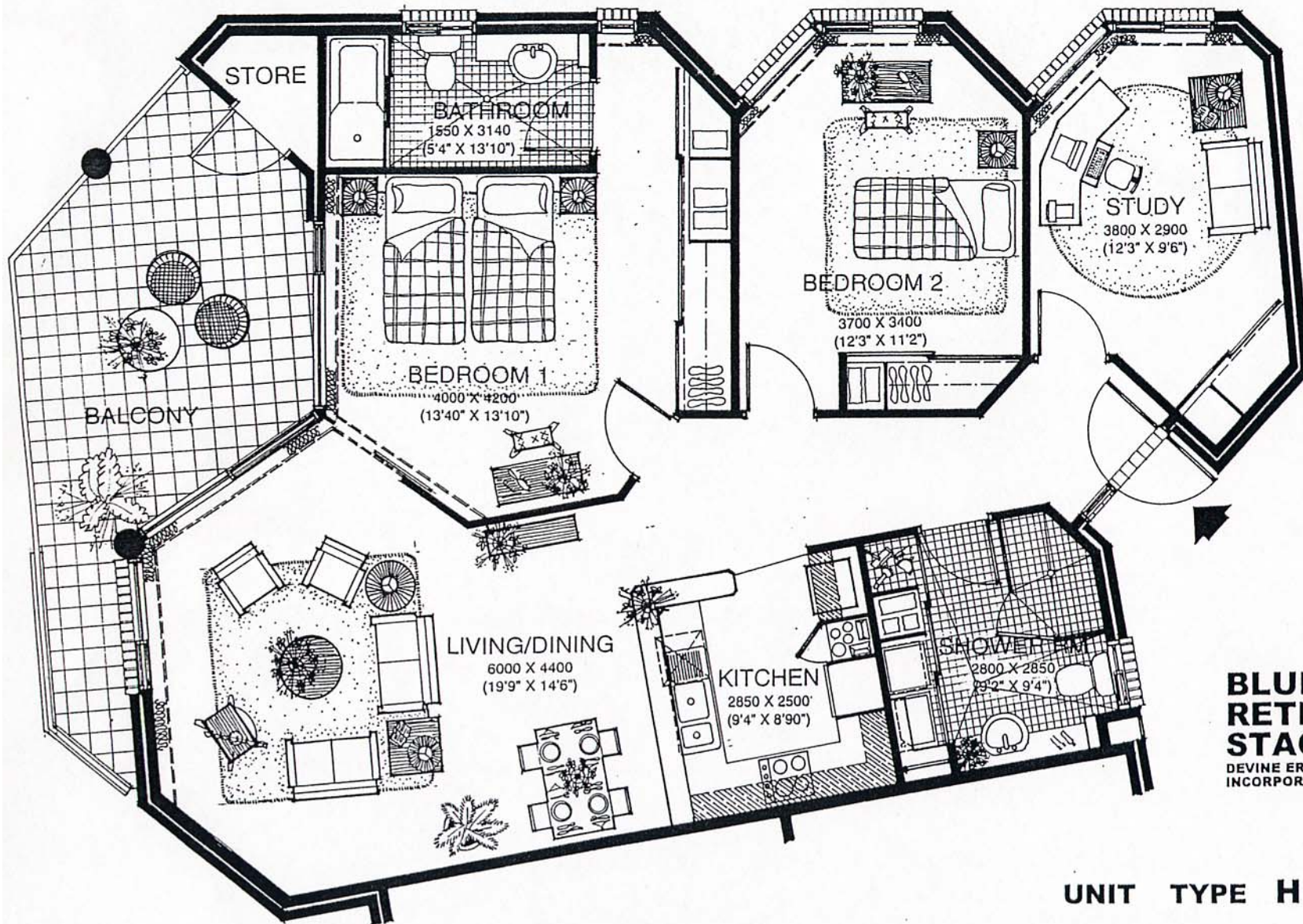
Suitable for one or two people, the E Type has a typical area of 90 sqm.



Call (02) 4233 1714
for your personal tour

BLUE HAVEN
VILLAGE

www.bluehavenvillage.com.au



**BLUE HAVEN
RETIREMENT VILLAGE
STAGE 4
KIAMA**

DEVINE ERBY MAZLIN AUST. PTY LTD
INCORPORATING TWIBILL ARCHITECTS
MAY1997

UNIT TYPE H

nett area (excluding perimeter walls)	109.9 m² (11.8 squares)
gross area (including perimeter walls)	119.05 m² (12.8 squares)
balcony	13.8 m²

