

E Type Unit

2 bedroom apartment plan

Unit type exists in Stages:

3 4 5



Our most popular two bedroom unit, the design of the E Type has been further refined with each new Stage.

As there are a number of different versions of the E Type design, actual room dimensions vary slightly from those shown.

Many units are a mirror image (or Em) design.

The E Type unit has two large bedrooms (both with built in wardrobes), an open plan kitchen and large covered balcony.

Suitable for one or two people, the E Type has a typical area of 90 sqm.



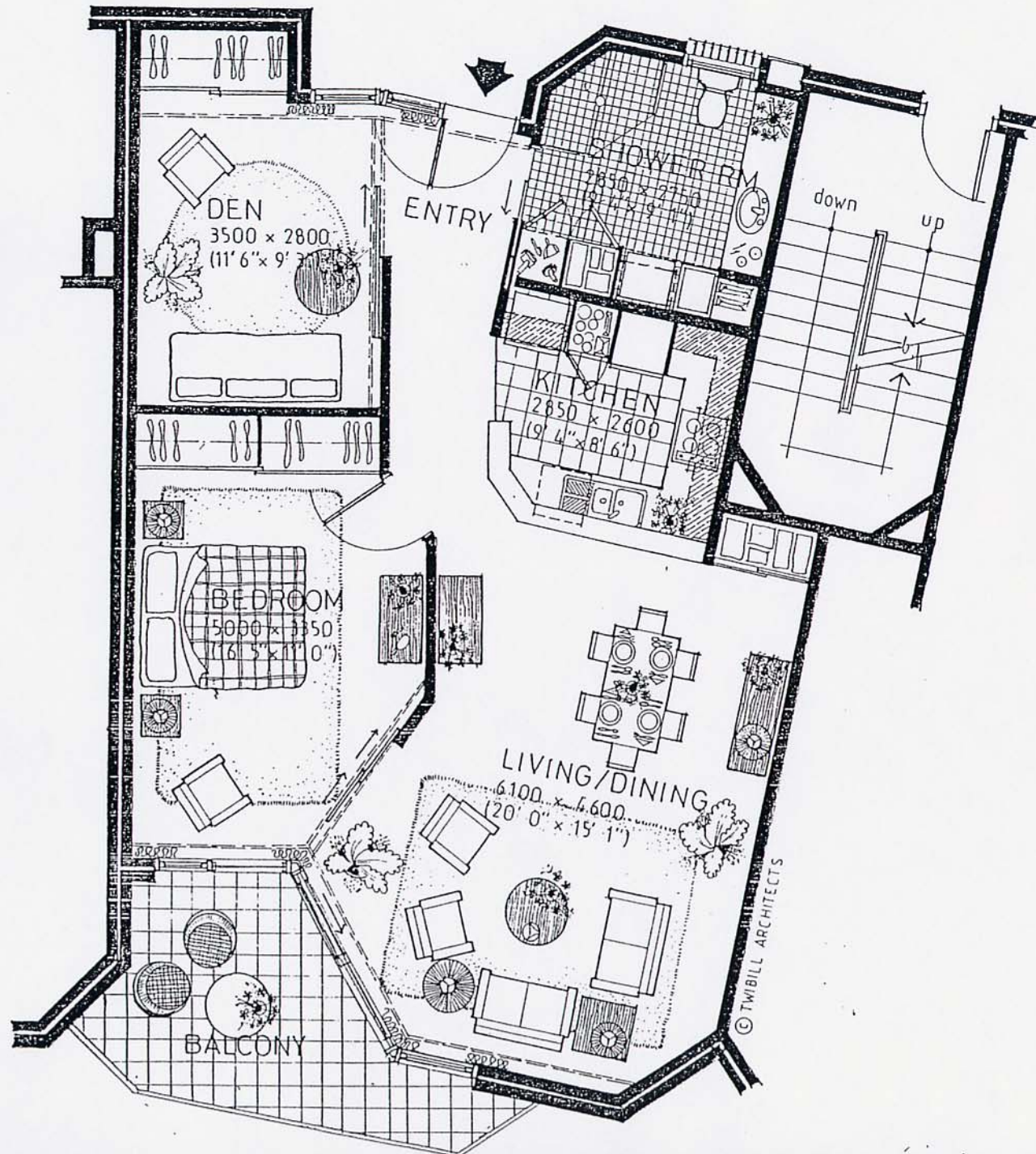
Call (02) 4233 1714
for your personal tour

BLUE HAVEN
VILLAGE

www.bluehavenvillage.com.au

UNIT No.

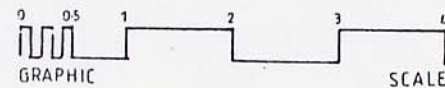
F 70 71 80 81 90 91



UNIT TYPE F

net area 76.71m² (8.26 squares)
(excluding perimeter walls)

gross area 82.56m² (8.89 squares)
(including perimeter walls)



AMENDMENTS

- a 22 5 91 Duct in shower room relocated
- b 27 10 91 Door swings and new position wall oven

**BLUE HAVEN
RETIREMENT VILLAGE
KIAMA
STAGE 3**

TWIBILL ARCHITECTS PTY LTD.
MAY 1991

DA-06 b

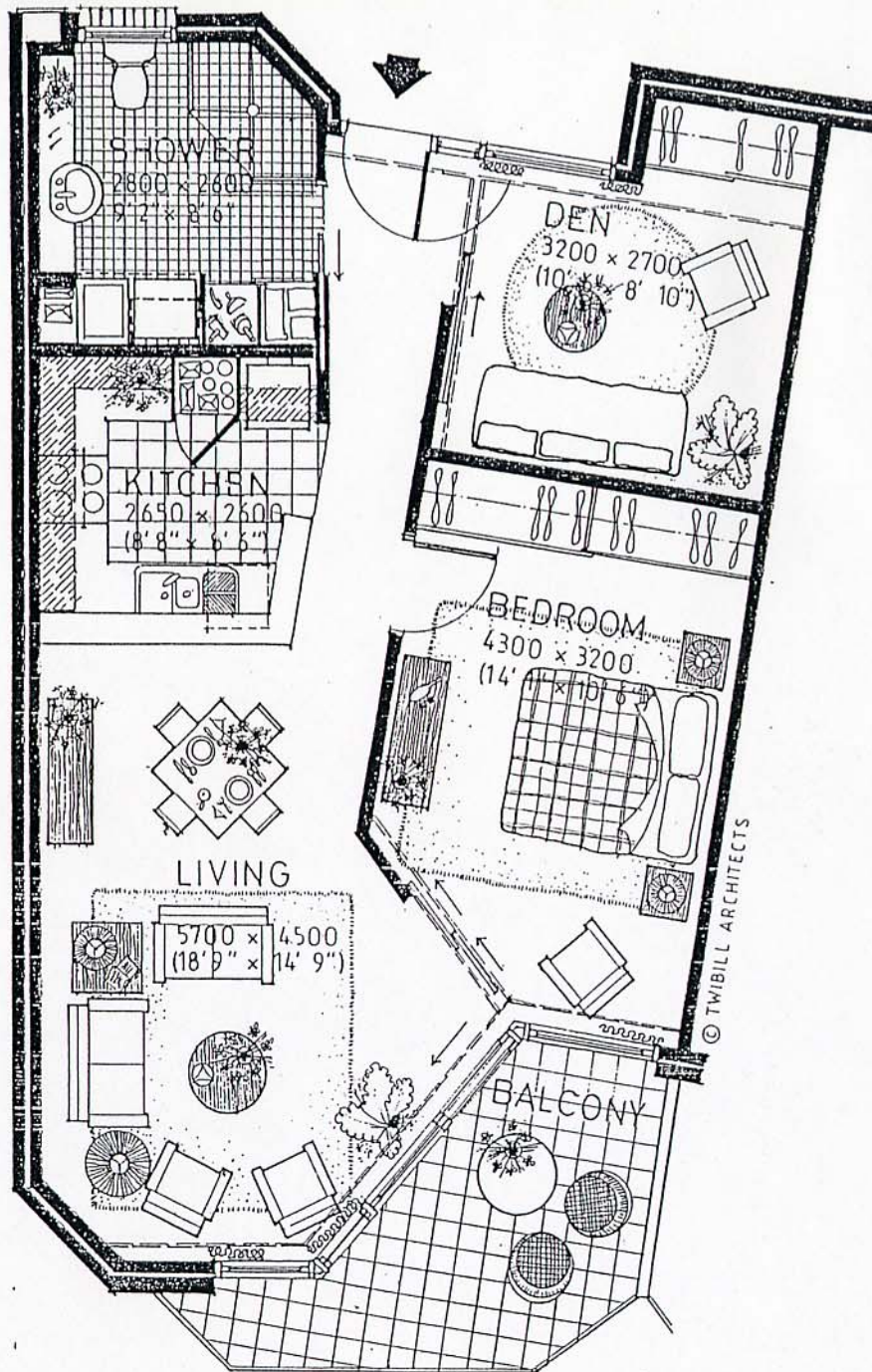
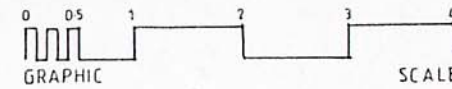
UNIT No.

G 72 73 82 83 92 93

UNIT TYPE G

net area 66.66m² (7.17 squares)
(excluding perimeter walls)

gross area 69.40m² (7.47 squares)
(including perimeter walls)



AMENDMENTS

- a 22 5 91 Duct in shower room relocated
- b 27 10 91 Door swings, balcony

**BLUE HAVEN
RETIREMENT VILLAGE
KIAMA
STAGE 3**

TWIBILL ARCHITECTS PTY LTD.